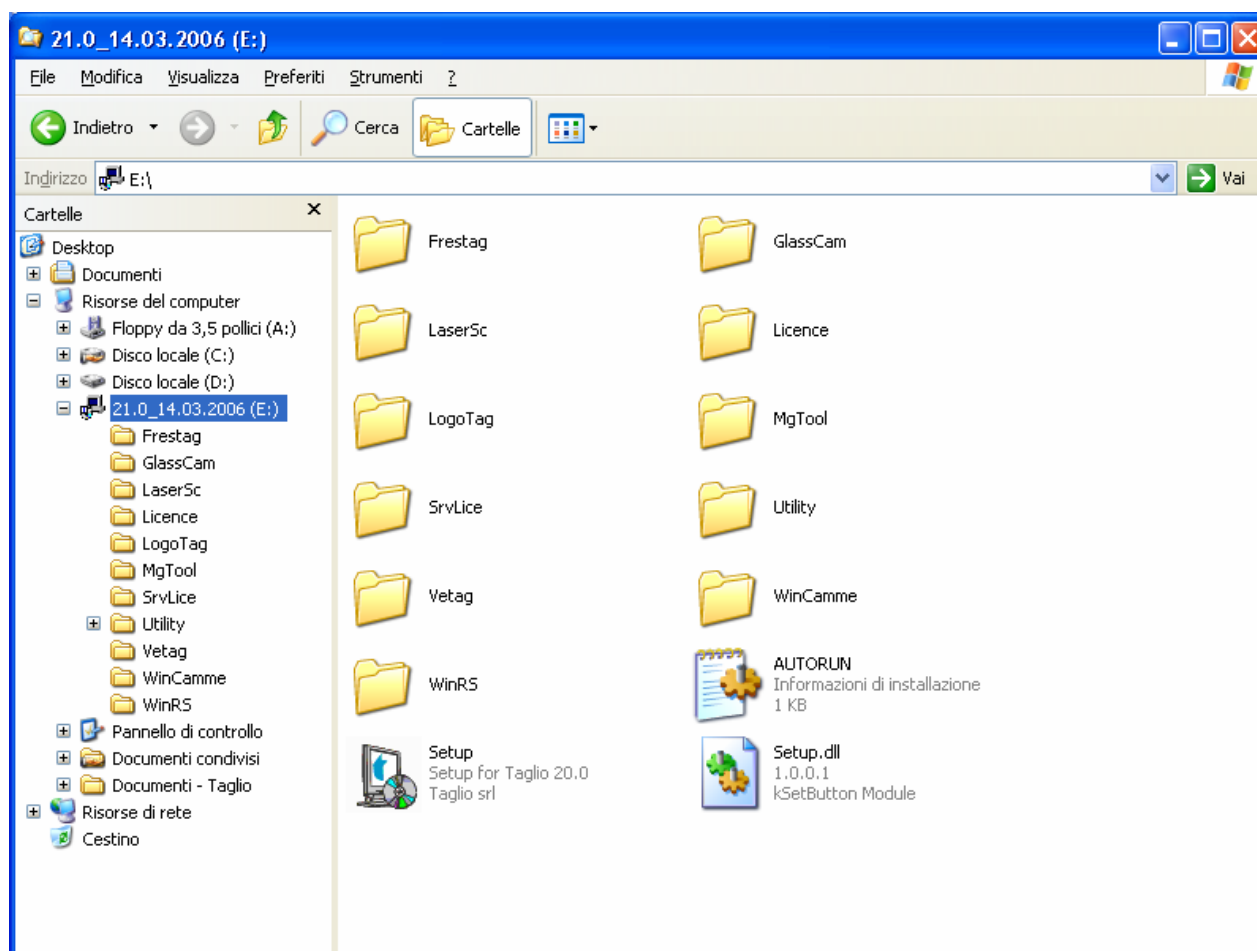


TGLSERVER: floating licence installation

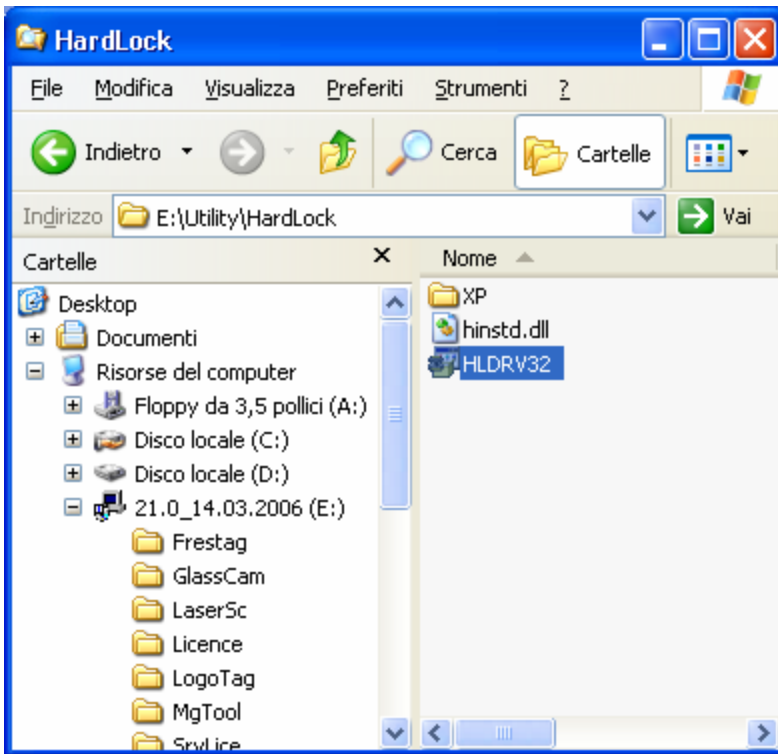
Computer "Server"

- 1) Login on the PC as "Administrator"
- 2) Insert CD-ROM into the drive
- 3) Double click on "Risorse del Computer", then on Cd Rom "Taglio 21.0" click DX on the mouse > Open



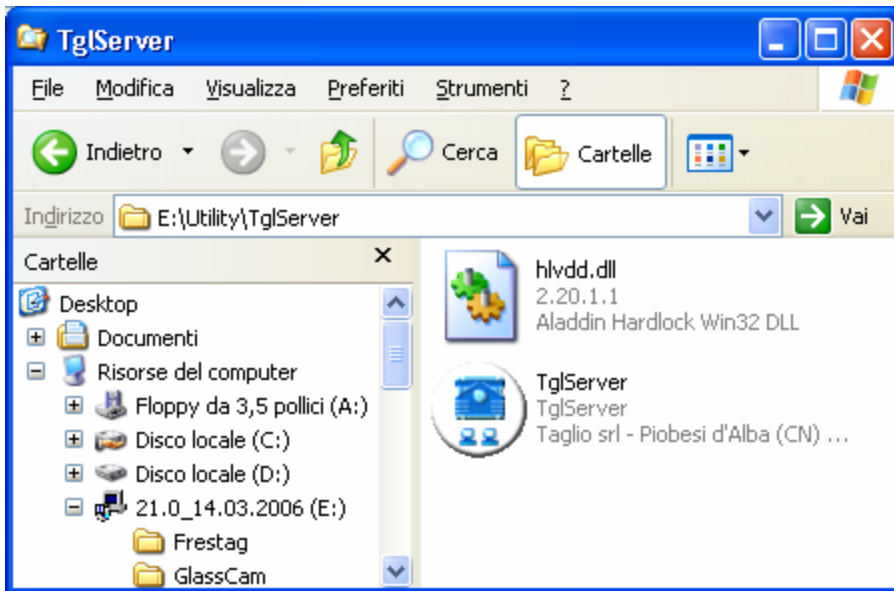
, open "Utility" folder an then "HardLock" folder

4) Launch "Hldr32.exe"



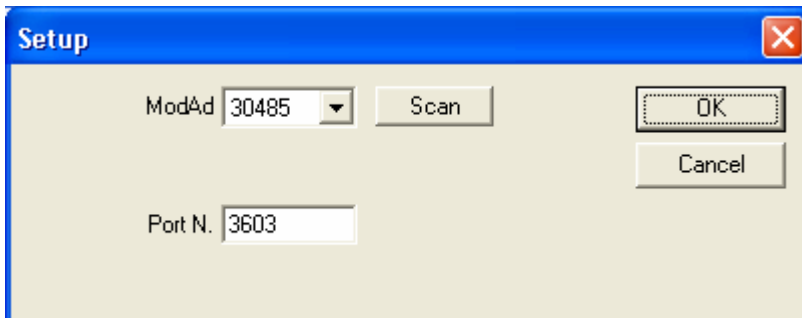
5) Insert USB Hardlock Key on PC USB Port

6) At the end of installation, return on "Utility" folder and open "TglServer" folder



7) Copy "TglServer.exe" and paste them in C:\Programs\Taglio\TglServer\ (create the path if necessary)

8) Launch "TglServer.exe" on the PC. Only on the first start , appear a "SetUp" window where configure the "ModAd" : the value to insert, for USB Protection Keys, is 30485. Port Number is the machine port used to connect the Computers, the default port is 3603 (in case of use of a Firewall, this port must be "open"). Click on "Ok"



9) After the confirm, **TglServer** will open, on **TglServer** screen there are several buttons:
- "Info" key: what programs an for how users the licences are active

Info dongle 30484

Dongle

Number C:\Programmi\Taglio\TglServer\30484.dat

Data Inst.

Customer

Client

Product	Version	Option	Multi	Expire
4:MGT00L	1:18.0 20.0 21.0	16383	1	Infinite!

- "SetUp" key: to modify Module Address and Port Number

Setup

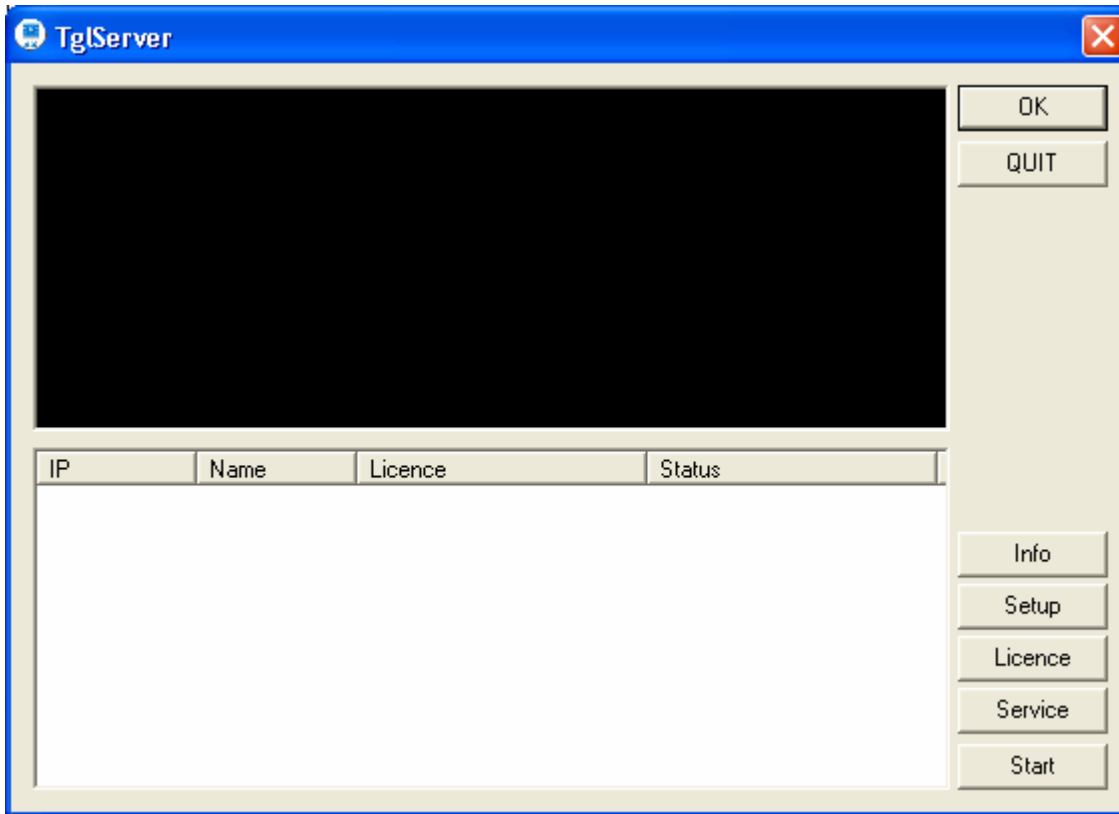
ModAd

Port N.

- "Licence" key: to add new licences and users on a key.

Licence

- "Service" key: to unlock blocked keys (call **Taglio Technical Support**).
- "Stop/Start" key: to stop or start **TglServer**



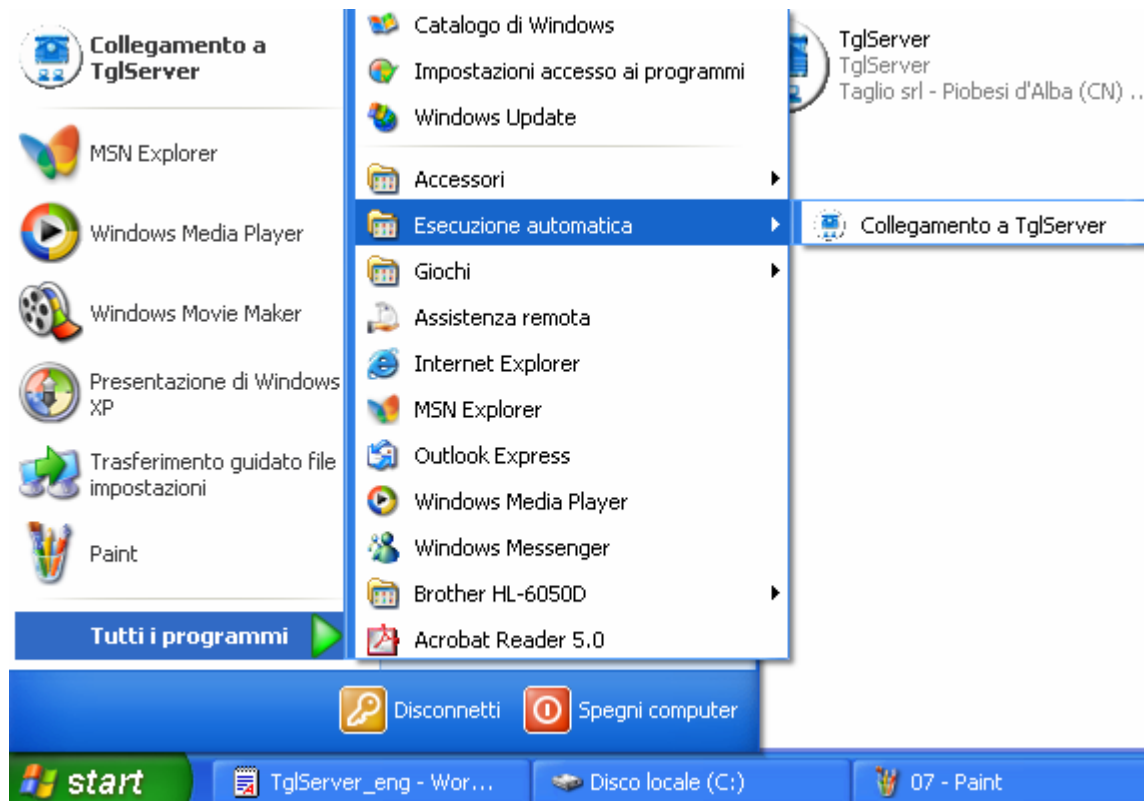
10) Selecting "OK" , the software will be an icon on Windows Tray Bar. This icon is a key which can assume different colors :

- Blue : **TgIServer** is active but there are no users
- Green : **TgIServer** is active and there are users connected
- Red : Access denied at Protection Key or Various problems (call **Taglio Technical Support**)



11) Clicking on this icon, will appear **TgIServer** window, to minimize use "OK"key. "Quit" Key will close this program.

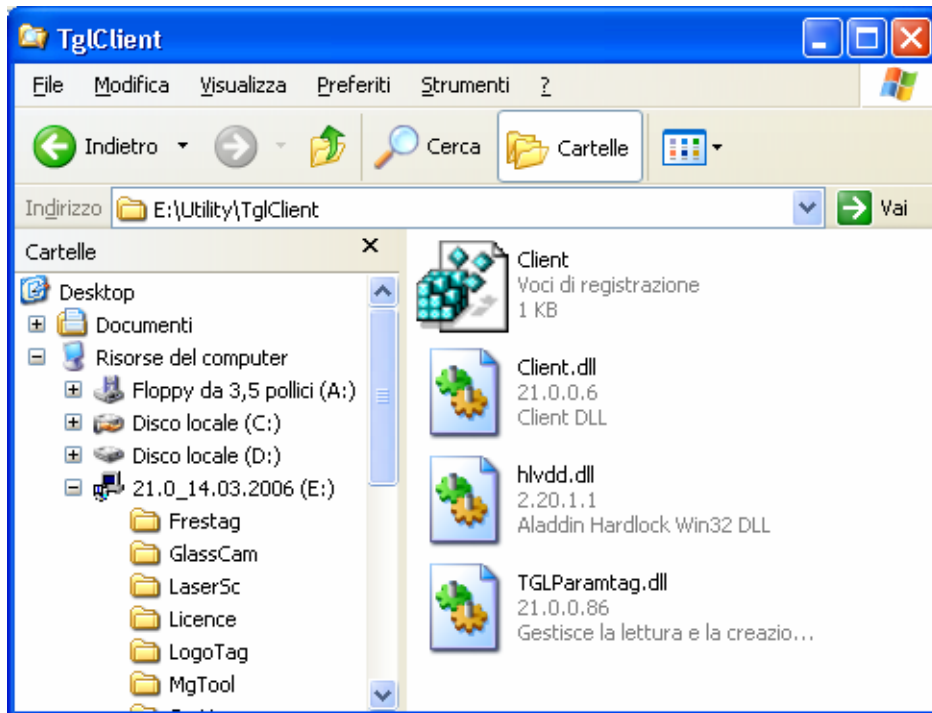
12) Is important to create a shortcut of **TgIServer.exe** on "Autorun" (Start > all programs > Autorun) (in the image is Esecuzione Automatica). At reboot , **TgIServer** will start automatically



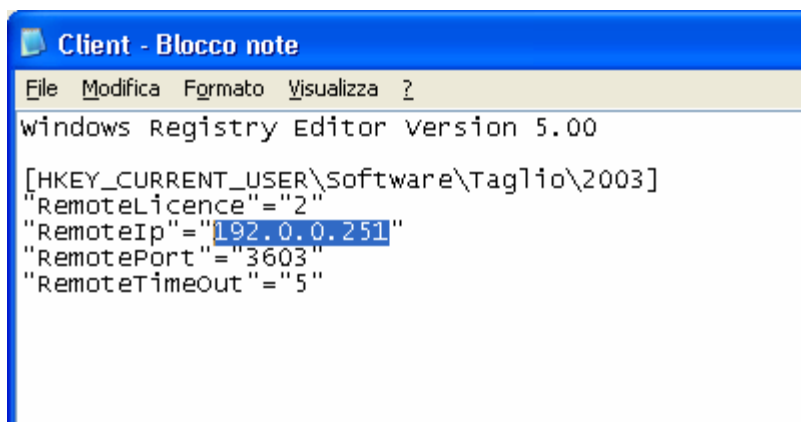
10) If all is ok, on Tray Bar will be a blue key icon

Computer "Client"

- 1) Close all Taglio Software eventually opened
- 2) Open Cd Rom "Taglio 21.0" with " Explore " (click DX on the mouse > Explore) ,open "Utility" folder an then "TgIClient" folder



- 3) Copy the 4 files (Client.reg,Client.dll, hlvdd.dll, TGLParamtag.dll) on C:\Program Files\Taglio\21.0\ (or on the path where Taglio Software is installed)
- 4) Open with notepad the file copied "Client.reg" (click DX on mouse > open with > notepad), search "Remotelp" and write the correct IP address of the server where is installed **TgIServer**



- 5) Save with **Save** (not with **Save as**) and close
- 6) Execute this file (Client.reg) to update the registry

7) Execute Taglio Software

For any problems, please contact **Taglio Technical Support**

Tel: +39 0173 619877 **e-mail:** assistenza@taglio.it