

CutVision • Tracker

Leathers acquisition station



MAXIMUM ERGONOMY

HIGHEST PRODUCTIVITY

GREATEST EASE OF USE

IMMEDIATE CHECK OF LEATHERS QUALITY

CUTVISION SYSTEM INTERACTION

taglio
cad - cam

**WORK
FLEXIBILITY**

The shooting system of **CutVision Tracker** allows the maximum operativeness flexibility for the pointing out of flaws and the quality areas of leathers.

All has been studied and shaped to reach the maximum efficiency and at the same time to allow the maximum work convenience.

CutVision Tracker ergonomu let the operator to concentrate on the leather to be worked without bonds of leather positioning and ambient.

LEATHER SHOOTING AND MARKING

The system operativity starts with the acquisition of the external leather profile (or of possible holes) through a digital camera with the highest resolution.

Then the operator picks and points the areas of different quality and flaws out. These are marked with a special electronic pencil able to convey the information to the computer.

The system allows to pick out those areas in which preferential directions of positioning for the pieces that need this bond are to be observed. **CutVision Tracker** is the sole shooting system that allows to move the leather during the flaws survey. It is likewise possible to replace the leathers afterwards, on the working table, or to rectify the flaws and the areas.



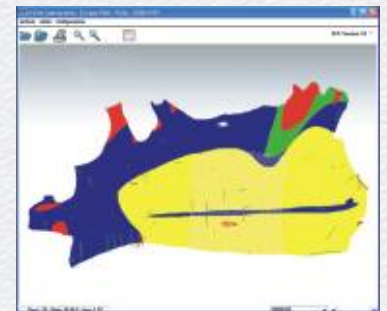
LEATHER INFORMATION

At the end of the shooting all the information about the leather quality are directly available.

Or rather:

- total footage number (with precision of cm^2)
- footage number and percentage of areas and flaws of the worse kind of leathersi
- classification in accordance with fixed levels of quality

The labels with the bar codes identifying the leathers in an univocal way are automatically printed.



MANAGERIAL SISTEM

After the shooting phases the leathers are archived in an electronic format in the CutVision system main archive. CutVision Tracker is completely integrated with the CutVision CVGest software that is able to manage the leathers store by lots and bundles (wads) and by organization of working loads of the CutVision cutting machines.